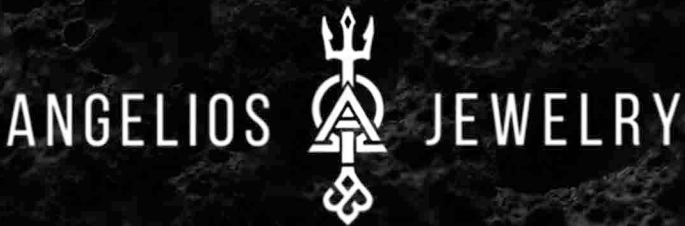


# Necklace Size Guide

Chain Length Chart + Pendant Fit Tips (Men & Unisex)



Pick the right length in under a minute

**Choose the right chain length in seconds.** Use the visual guide to see where each length sits, then match it to your pendant size and styling.

Tip: If you're between lengths, choose longer—especially for pendants.

## WHERE IT SITS (VISUAL GUIDE)



18" / 46 cm  
20" / 51 cm  
22" / 56 cm  
24" / 61 cm  
26" / 66 cm  
28" / 71 cm  
30" / 76 cm

Fit varies by height and body frame. Use this as a visual reference.

## QUICK LENGTH CHART

| Length | CM | Typical fit                                    |
|--------|----|--|
| 18"    | 46 | Close to the neck / collarbone                 |
| 20"    | 51 | Collarbone to upper chest                      |
| 22"    | 56 | Upper chest (most popular for pendants)        |
| 24"    | 61 | Mid-chest (balanced, more presence)            |
| 26"    | 66 | Lower mid-chest (statement, layering-friendly) |
| 28"    | 71 | Lower chest (bold styling)                     |
| 30"    | 76 | Strong statement / streetwear layering         |

## FAST RULES

**Everyday pendant:** 22"–24"

**Statement pendant:** 24"–28"

**Layering:** 20"–22" + 24"–26"

**Gift-safe pick:** 22" or 24"

## MEASURE AT HOME (NO TOOLS NEEDED)

- 1) Wrap a string around your neck.
- 2) Adjust to your preferred drop point.
- 3) Mark the string and measure it with a ruler (inches or cm).

If you're unsure, pick the longer option—especially for pendants.

## GIFT BUYING (SAFEST CHOICE)

**22" or 24"** fits most men & unisex wearers and works with most pendants.

If the recipient prefers bold styling, choose **26"**.

## Angelios Jewelry


Need help choosing? Contact us and we'll recommend the best length.



Chain Necklaces • Pendants • Shipping Policy • Jewelry Care



 [www.angeliosjewelry.com](http://www.angeliosjewelry.com)

 [support@angeliosjewelry.com](mailto:support@angeliosjewelry.com)

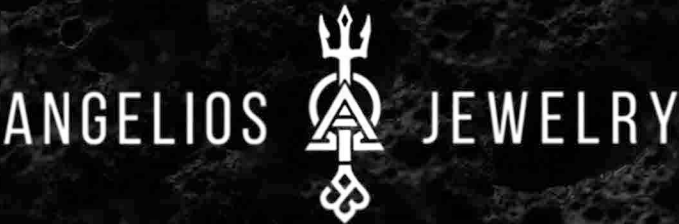
 [facebook.com/angeliosjewelry](https://facebook.com/angeliosjewelry)

 [@angeliosjewelry](https://@angeliosjewelry)

 [angeliosjewelry](https://angeliosjewelry)

# Necklace Size Guide

Chain Length Chart + Pendant Fit Tips (Men & Unisex)



## MATCH LENGTH TO PENDANT SIZE

**Small pendants:** 20"–22" (clean, minimal)

**Medium pendants:** 22"–24" (best balance)

**Large/heavy pendants:** 24"–28" (prevents the pendant from sitting too high)

If you wear hoodies or layered outfits, choose 24"+ so the pendant stays visible.

## MEASURE AT HOME (NO TOOLS NEEDED)

- 1) Wrap a string around your neck.
- 2) Adjust to your preferred drop point.
- 3) Mark the string and measure it with a ruler (inches or cm).



shops/AngeliosJewelry



www.angeliosjewelry.com



@AngeliosJewelry



@AngeliosJewelry



www.angeliosjewelry.com



facebook.com/angeliosjewelry



support@angeliosjewelry.com



@angeliosjewelry



angeliosjewelry